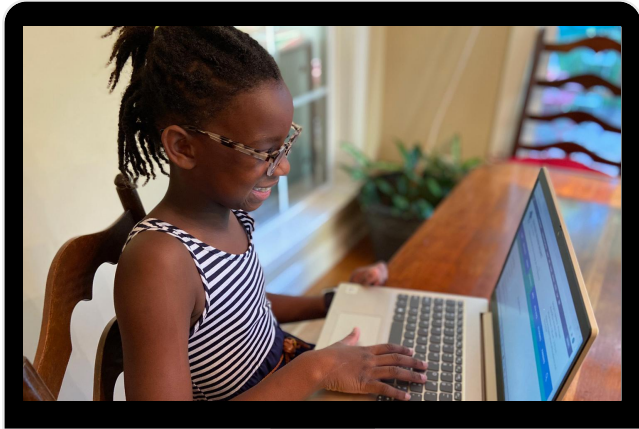


# PEARL

---

## Project for Equitable Access in Remote Learning



**Our goal is to help mitigate the education equity gap that has intensified as a result of COVID-19.**

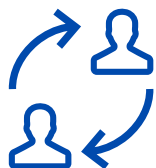
**PEARL will provide support to 9th - 12th grade students at South East Raleigh High School.**



The pilot program this fall will support one teacher and classroom of students at South East Raleigh High School with the hopes of expanding in the Spring semester.



Pods of 3-4 students will work with their college/grad students for 4 hours per week and be assigned a layered team; one grad/college student will work with the students, and a retired teacher will mentor each college/grad student instructor.



We hope to support the program with a \$1500 stipend for each grad/college student and \$250 stipends for each participating family and retired teacher acting as mentor to the instructor.



College instructors will help classroom teachers by flagging learning issues or problem areas and ensure that students are submitting necessary assignments through the virtual platform.

**DURING THIS TIME, IT IS CRITICAL THAT FAMILIES HAVE ACCESS TO THE SUPPORT OF TRUSTED ADULTS DURING VIRTUAL SCHOOL DAYS.**

**YOUR DONATION WILL HELP PAY FOR INSTRUCTORS, CONDUCT BACKGROUND CHECKS, AND SUPPORT THE NEEDS OF FAMILIES STRUGGLING TO PIVOT TO AN UNSUPERVISED ONLINE WORLD OF EDUCATION.**